



# NGFA Regulatory Compliance Seminar

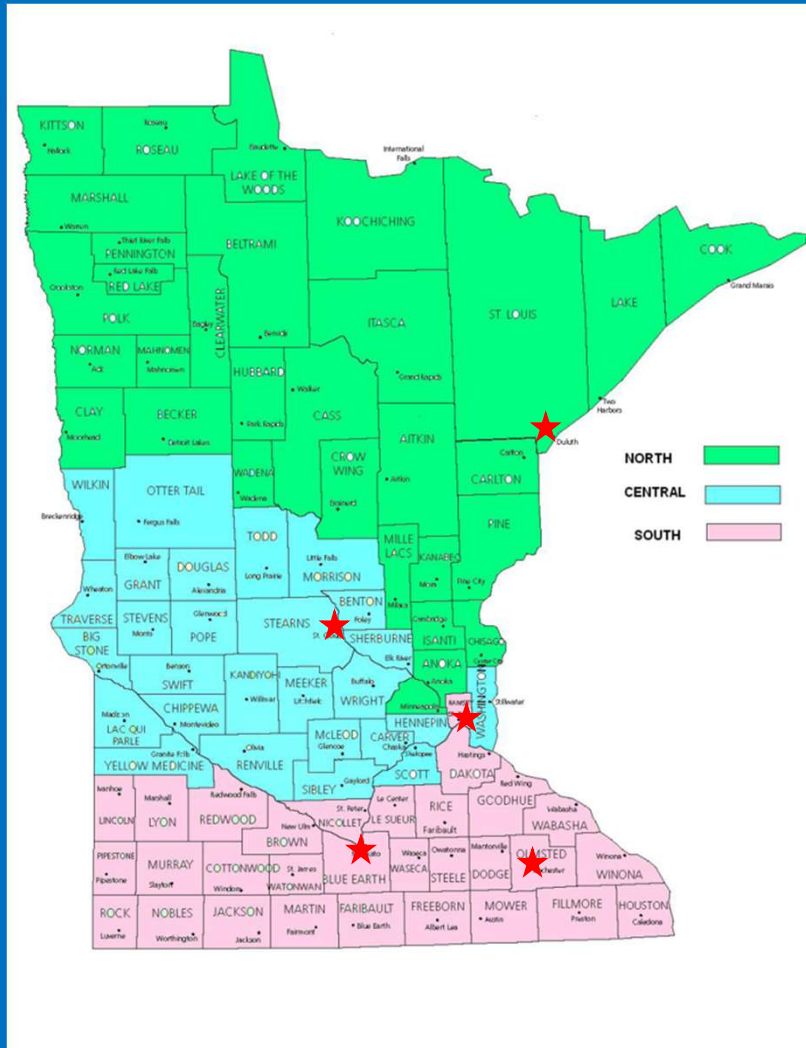
West Fargo, ND  
March 27, 2019

Sarah Kickbusch | Supervisor

# Agenda

- State Program
- Serious Injuries & Fatals
- Most Cited Standards
- Grain Program Specifics
- Penalties
- MN News

# MNOSHA Compliance FFY 2018



## Office Locations ★

North

South

Central



**James Krueger** Compliance Director  
**Nancy Zentgraf** Training and Outreach Director

<b>North Supervisor</b>	<b>Vacant</b>
<b>Central Supervisor</b>	<b>Sarah Kickbusch</b>
<b>South Supervisor</b>	<b>Clayton Handt</b>
<b>Principal Supervisor</b>	<b>Ryan Nosan</b>
<b>Health Supervisor</b>	<b>Ron Anderson</b>

# MNOSHA Compliance Current Staff

- 24 Safety Investigators
- 9 Health Investigators
- 7 Principal Safety & Industrial Hygiene Investigators
- 4 MNSTAR/Consultants
- 2 Directors
- 2 Training Officers
- 3 Discrimination Investigators
- 3 Management Analysts
- 8 Program Support
- 8 Supervisors

The organizational chart for MNOSHA 23(g) is structured as follows:

- Commissioner**
  - James Klinger, Director of Compliance**
    - Don Anderson, OSHA Night Team Supervisor**
      - Mike Butler, Management Analyst 4
      - Angi Walker, Management Analyst 4
      - Betty Taylor, Management Analyst 4
      - Greg Paschall, Sr. Engineer
      - Carol Wilson, Sr. Engineer
      - Thomas Wilson, Industrial Hygienist 3
      - John Kinsella, Electronic Tech.
    - Barry Hunt, Office Services, Supv. 2**
      - Russ Hasty, OSH Nurse
      - Pat McLaughlin, OSH Nurse
      - Janey Peterson, OSH Nurse
      - Lynette Hocking, OSH Intermediate
      - Tracy Jones, OSH Intermediate
      - Deanne Buegler, OSH Intermediate, Machine Office
      - Todd Harkness, OSH Intermediate
    - Ryan Ryan, OSHA Night Team Supv.**
      - Rob Dering, Safety Investigator 4, B. Court Office
      - Robert Peterson, Safety Investigator 4
      - Lee Craig, Safety Investigator 4, B. Court Office
    - Jeff Bennett, OSHA Night Team Supv.**
      - Quinn Wilkins, Safety Investigator 3, Court Office
      - Dana Peterson, Safety Investigator 3, Court Office
      - Kevin Bunkel, Safety Investigator 3, Court Office
      - Natasha Stone, Safety Investigator 3, Court Office
      - Cyndi Bergquist, Safety Investigator 3
      - Michael Symons, Sr. Engineer
      - Mark Mathews, Safety Investigator 2
      - Lisa Hader, Safety Investigator 2, B. Court Office
    - Scott Townsend, OSHA Night Team Supv.**
      - Royce Oberdorf, Safety Investigator 2, B. Court Office
      - Matthew Lane, Safety Investigator 2
      - Michael Morris, Safety Investigator 2
      - Robert Dennis, Safety Investigator 2
      - Jennifer Agnew, Safety Investigator 2
      - Sharon Arnold, Safety Investigator 2
      - Sharon Jacobson, Safety Investigator 1
      - John Thomas Arnold, Safety Investigator 1
    - Debbie Russell, OSHA Night Team Supv.**
      - VALCANT, Safety Investigator 1, Machine
      - Shirley Madsen, Safety Investigator 3, Machine Office
      - Rylee Van Land, Safety Investigator 3, Machine Office
      - Kathie Belsu, Safety Investigator 2
      - Don Mathews, Safety Investigator 2
      - Andreasen, Michaelson, Safety Investigator 1, Machine Office
      - David Boylan, Safety Investigator 2
      - Robert Townsend, Safety Investigator 2
    - Charles Gougherty, OSHA Night Team Supv. Distribution**
      - Mike Johnson, Safety Investigator 2, Distribution
      - Thony Thomsen, Safety Investigator 2, Distribution
      - Cole Long, Safety Investigator 1, Distribution
    - Lee Peterson, OSHA Outreach Office**
    - Deane Aard, OSHA Training Office**
  - Theresa Taylor, Director of Compliance**
    - Deane Petrus (OSHA), OSHA Management Team Supv.**
      - James Peterson, Sr. Engineer, Ergonomics Program
      - YVONNE BUCKNER (OSHA), Public Sector, Safety Consultant
      - VACANT (OSHA), (OSHA) Public Sector, Safety Consultant
    - Marlene Peterson (OSHA), OSHA Management Team Supv.**
      - VACANT, Sr. Engineer, Ergonomics Program
      - VACANT, Sr. Engineer, Ergonomics Program
      - VACANT, Sr. Engineer, Ergonomics Program
      - VACANT, Sr. Engineer, Ergonomics Program

**MNOSHA 23(g) Organizational Chart**

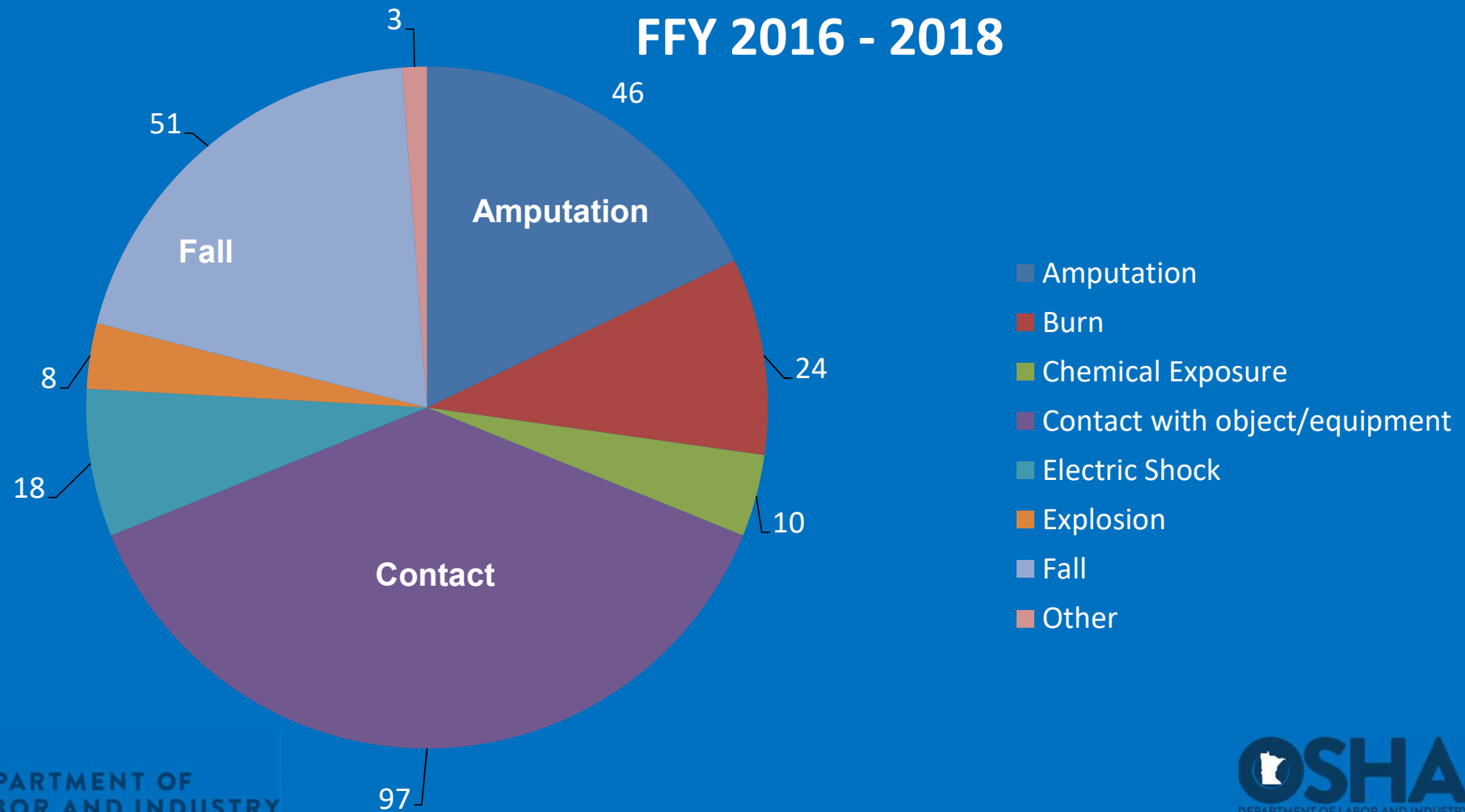
Last Updated : 12/05/2018

# MNOSHA's Mission Statement

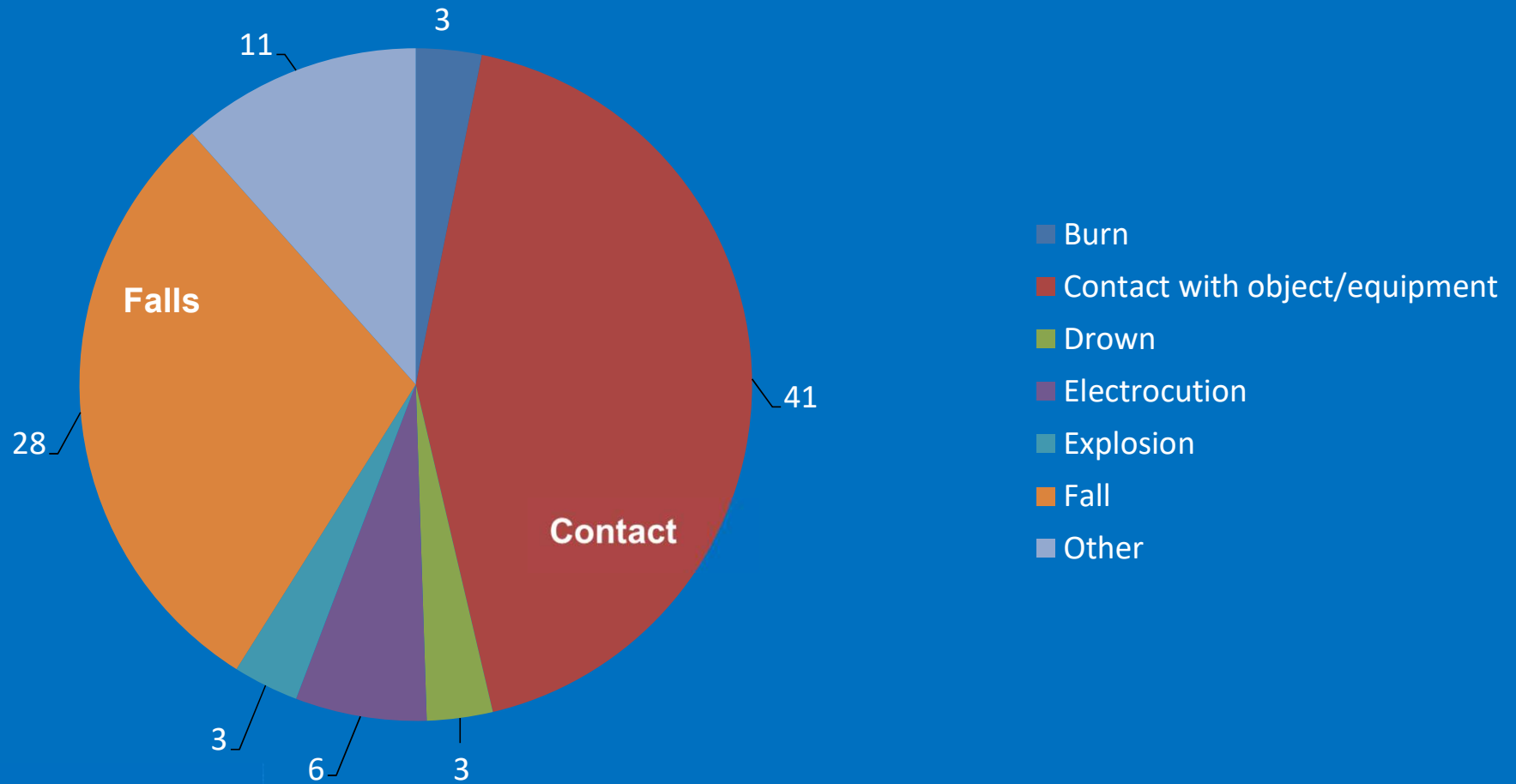
- To make sure every worker in the State of Minnesota has a safe and healthful workplace.



## Cause of all Serious Injuries FFY 2016 - 2018



## Cause of all Fatalities FFY 2014 - 2018





# Minnesota OSHA's Most Frequently Cited Standards in General Industry Federal Fiscal Year 2018

STANDARD	DESCRIPTION	FREQUENCY
1910.1200	Hazard communication	266
1910.212	Machine guarding – general requirements	155
1910.147	Control of hazardous energy (lockout/tagout)	139
1910.305	Electrical wiring methods, components and equipment for general use	109
Minnesota Rules 5205.0116	Carbon monoxide monitoring	106
Minnesota Rules 5205.1200	Cranes and hoists	100
Minnesota Rules 5206.0700	Employee right-to-know training	100
1910.178	Powered industrial trucks	96
1910.134	Respiratory protection	95
Minnesota Statutes 182.653, subd. 8	A Workplace Accident and Injury Reduction (AWAIR) program	87

# Grain Inspections

- Local Emphasis Program
- Total Grain Inspections (FFY 2014- FFY 2018): 80

# Most Cited FFY 2014-2018

- 1910.272 Grain Standard

- Housekeeping
- Preventive Maintenance
- Bin Entry
- Training

- 1910.23—1910.29

Walking-Working Surfaces

- 1910.146

Permit Required Confined Space

- 1910.303—1910.335

Electrical

- 1910.36—1910.37

Exits

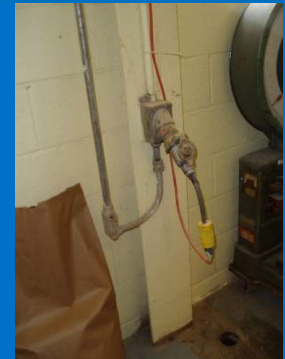
- 1910.212—1910.219

Machine Guarding

- 1910.1200/5206.700

Hazard Communication/Employee Right-to-Know

- 5205.0140 Emergency Lighting



**TABLE 6.9 - PENALTY CHART**  
**Unadjusted for Good Faith, Size and History**

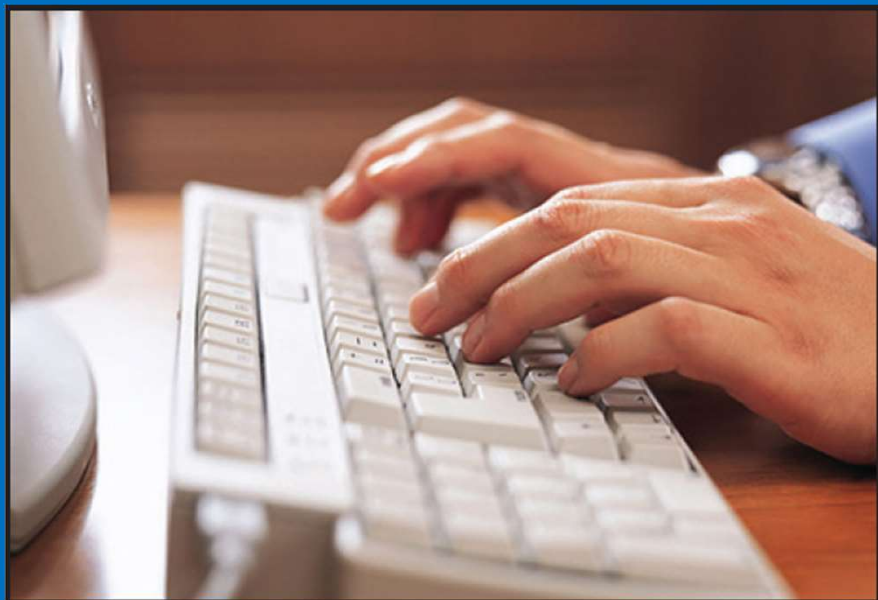
<b>PROBABILITY</b>  <b>BASED ON:</b> - Employee Exposure - Proximity to Hazard - Duration of Hazard - Work Conditions	<b>SEVERITY</b> <b>BASED ON:</b> The injury or illness that could reasonably be expected to result from an employee's exposure to the violative condition.					
	<b>Nonserious</b>		<b>Serious</b>			
	<b>A</b>	<b>B</b>	<b>C</b>	<b>D</b>	<b>E</b>	<b>F</b>
<b>Lesser</b> (1-4)	0	\$500	\$1500	\$2500	\$3500	\$5500
<b>Greater</b> (5-8)	\$250	\$1000	\$2000	\$3000	\$4500	\$7000

## Average Penalty per Serious Violation (FFY18):

- 1-25 EEs: \$621
- 26-100 EEs: \$760
- 101-250 EEs: \$2,295
- >250 EEs: \$2,207

# MN News

- Injury Reporting & Tracking
  - **651-284-5050 or 877-470-6742**
  - **After hours: 800-321-6742**
- Proposed Penalty Legislation



# Thank You!

Sarah Kickbusch  
sarah.kickbusch@state.mn.us  
651-284-5186

**This material can be provided to you in a different format (Braille, large print or audio) if you call the MNOSHA Training/Outreach Office at (651) 284-5050; toll-free at 1-877-470-OSHA (1-877-470-6742).**

**Material contained in this publication is in the public domain and may be reproduced, fully or partially, without permission of the Minnesota Department of Labor and Industry or MNOSHA. Source credit is requested but not required.**

**For more information, contact:**

**Minnesota Department of Labor & Industry  
Occupational Safety & Health Division  
443 Lafayette Road  
St. Paul, MN 55155-4307  
Toll-free: 1-877-470-6742  
E-mail: [OSHA.Compliance@state.mn.us](mailto:OSHA.Compliance@state.mn.us)  
<http://www.dli.mn.gov>  
Revised 12/5/2018**

3/27/2019

[www.dli.mn.gov](http://www.dli.mn.gov)

